

## AWARD WINNERS

### LEGISLATIVE & RESEARCH ADVOCACY AWARD



#### **Suzann Ruch, B.S.**

Ms. Ruch was a Senior Legislative Assistant with the Michigan Senate and was a Legislative Aide to former Senator Joe Schwarz. She has 16 years of experience in a legislative office working on a wide variety of legislative issues, including tracking various state budgets. She is very knowledgeable regarding the legislative process, rules, and state laws and has worked on the successful passage of many new statutes. Her work has included: researching and tracking legislative and appropriation issues; drafting legislation; working with staff, constituents and interest groups to bring legislation to successful completion; preparing materials for Senate sessions; assisting constituents with resolution of problems and procurement of state grant monies; represented Senator Schwarz at constituent events and other public forums; and testified at Senate and House committee hearings on legislation.



#### **Jill Costello**

Ms. Costello is currently a Legislative Aide to Senator Tom George in the Michigan Senate. Previously to her work with George, she did constituent services for Senate Majority Leader Dan DeGrow, and prior to that was a Legislative Aide to Senator Mike Goschka. Ms. Costello's initial work as an aide was for 8 years in the Michigan House of Representatives for Representatives Claude Trim and Tom Middleton. Her experience includes: legislative research, constituent casework, public relations, tribute writing, scheduling, aide to subcommittee Chair for Family Independence Agency, and Agriculture budgets.



#### **Senator Tom George, M.D.**

Senator George was elected to the 20th District of the Michigan Senate in 2002 after serving one term in the House of Representatives. The 20th Senate District includes all of Kalamazoo County, and Antwerp and Paw Paw Townships in Van Buren County. As a member of the Senate Appropriations Committee George serves on five sub-committees. He is Chair of the History, Arts and Libraries (HAL) sub-committee and Vice-Chair of Capitol Outlay, Department of Community Health (DCH), Family Independence Agency (FIA) and Commerce, Labor and Economic Development. George also serves on the Senate Health Policy Committee and the Joint Capitol Committee. George has been active in the Kalamazoo County Republican Party for over a decade and served the party as a precinct delegate and as a delegate to the State Republican Convention. A practicing physician in the Kalamazoo area for 17 years, George served as the medical director for Hospice of Greater Kalamazoo from 1996 until 2001.



Michigan Society  
for Medical Research

P.O. Box 3237 • Ann Arbor, MI 48106-3237

tel (734) 763-8029 fax (734) 930-1568 email MISMR@umich.edu

www.mismr.org

## Michigan's RESEARCH & DEVELOPMENT CLIMATE

### *State Government, Medical Research & You*

**April 20, 2005**

Kellogg Center  
Michigan State University

### WELCOME...

As the recent election demonstrated, science in general and medical research in particular have emerged as vital issues in public debate. The Michigan Society for Medical Research and MichBio jointly extended an invitation to our leaders in Lansing to meet with our members today. The goal of the dialogue will be to address these contemporary challenges of the 21st Century and to help shape the future direction for biomedical research in Michigan.

### PRESENTED BY:



Michigan Society  
for Medical Research



### PROGRAM COMMITTEE:

Paul Owen Ashba, Esq.  
Karen Hudson  
Rebecca Elish-Stengle, M.P.H.

Special thanks to:  
Terry Fracala

### PROGRAM

12:00 PM **Registration & Luncheon**

12:45 PM **Welcome**

**Louis G. D'Alecy & Michael D. Witt**

*Introduction by Rebecca Elish-Stengle*

**Pamela Paul-Shaheen** — Speaking on behalf of Governor Granholm  
*Introduction by Louis G. D'Alecy*

1:00 PM **The Core Technology Alliance, Inc. —  
Providing Life Sciences Technology to the  
State of Michigan**

**Robert F. Todd**

*Introduction by Louis G. D'Alecy*

Dr. Todd, who has been involved since its inception, will be highlighting the development of The Core Technology Alliance. This collaboration among the University of Michigan, Michigan State University, Wayne State University, and the Van Andel Institute will serve the life sciences needs of academic and industry scientists in the State with the creation of six core facilities: genomics, proteomics, animal models, structural biology, bioinformatics, and high throughput drug screening.

2:00 PM **Presentation of Awards**

*Introduction of presenters by Louis G. D'Alecy*

**Bennett J. Cohen Educational Leadership Award**

**Roger S. Newton**

*Presented by Charles Bisgaier*

**Science Education Award**

**Bruce D. Kocher**

*Presented by Paul Newton*

**Merlin E. Ekstrom**

*Presented by Karen Rossman*

**2005 Essay Contest Winner**

**Situnyiwe Chirunga** — Student

**Cathy German** — Teacher

*Presented by Jim Crissman*

**Legislative & Research Advocacy Award**

**Suzann Ruch** — Legislative Aide to former Senator Joe Schwarz

**Jill Costello** — Legislative Aide to Senator Tom George

**Senator Tom George** — Jill Costello accepting on his behalf

*Presented by Karen Hudson*

3:00 PM **Break**

3:15 PM **Making Michigan a 21st Century Leader in  
BioTech, R & D and Homeland Security**

**David Hollister**

*Introduction by Louis G. D'Alecy*

To create jobs of the future, Governor Granholm announced a *21st Century Jobs Initiative* to launch Michigan forward as the nation's epicenter of alternative energy research, a leader in the biotech industry and a hotbed for homeland security R & D. The Initiative calls for a \$2 billion investment over the next decade to create 72,000 high paying jobs, and grow Michigan's economy by increasing the amount of innovation and the pace of commercialization in our universities, corporations and non-profit research institutions. Today, Michigan is the state that builds the most technologically advanced, ass produced products in the world — the car. Tomorrow, we'll be the state that does the research that ends this country's reliance on foreign oil, secures our homeland, and invents lifesaving drugs and medical innovations.

4:00 PM **Wrap-up — Louis G. D'Alecy**

## SPEAKERS



**Louis G. D'Alecy, D.M.D., Ph.D.**  
MISMR, *President*

Dr. D'Alecy is a Professor of Physiology at the University of Michigan. His research interest is hypothesis testing in the area of normal and pathologic control and regulation of the cardiovascular system. A wide range of experimental approaches is used to evaluate the functional consequences of reduced blood flow and oxygen availability. Preventive and therapeutic interventions are pursued as well as basic mechanisms of cell damage. Whole animal studies using either anesthetized or conscious preparations are complemented by in vitro preparations, where appropriate, to test physiologically important hypotheses. Systemic hypoxia, regional ischemia and cardiac arrest/resuscitation models, in mice, rats and dogs are used sequentially and simultaneously to acquire data relevant to the resolution of clinical problems.



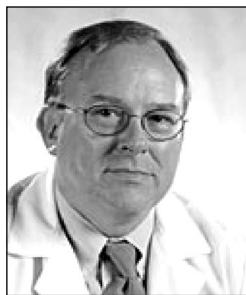
**Michael D. Witt, PharmD, JD**  
MichBio, *Executive Director*

Dr. Witt is an experienced early-stage biomedical technology executive with knowledge regarding university medical technologies and the life sciences industry. Prior to joining MichBio, he was CEO of Technology Enterprise Development Corporation, a medical technology development company and CEO of vCure.com, Inc., a healthcare information and software company. He was also a healthcare attorney for Cox, Hodgman & Giarmarco of Troy, Michigan. He received a Doctor of Pharmacy degree from the University of California at San Francisco, and a law degree from Case Western Reserve University in Cleveland.



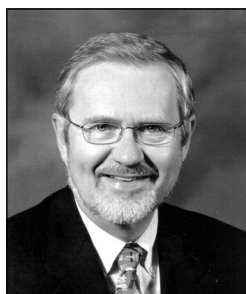
**Pamela Paul-Shaheen, DrPH**

Dr. Shaheen currently serves as the Health & Human Services Policy Advisor in the Office of the Governor. In this position, she advises Michigan's Governor on programs and policies to improve the health and welfare of Michigan residents. Dr. Shaheen was the Founding Director of the Center for Advancing Community Health. The Center's mission was to connect funders, communities, and policymakers to improve community health. The Center shapes change by building community capacity, informing policymaking, facilitating collaborative decision making and translating the knowledge it gains into practical tools and promising practices. Prior to creating and leading the Center, Dr. Shaheen served as a Senior Program Director with the Michigan Public Health Institute.



**Robert Todd, M.D., Ph.D.**

Dr. Todd is the Frances and Victor Ginsberg Professor of Hematology/Oncology and chief of the Division of Hematology/Oncology, Department of Internal Medicine, University of Michigan of Medical School. He also serves as Associate Vice President for Research (Health Affairs), Office of the Vice President for Research (OVPR), University of Michigan. Among his responsibilities on behalf of the OVPR, Dr. Todd participated in the planning and initial development of the Core Technology Alliance, the subject of his keynote talk. He was appointed to the medicine faculty of Harvard in 1981 before moving to the University of Michigan in 1984 as associate professor of internal medicine. The focus of Dr. Todd's scientific efforts at Harvard and Michigan was the identification and characterization of human leukocyte receptors involved in the acute inflammatory response. Dr. Todd is a practicing medical oncologist with expertise in lung and gastrointestinal oncology.



**David C. Hollister**  
Department of Labor, Economic Development and Urban Growth, *Director*

Former Lansing Mayor David Hollister joins the Granholm Administration to direct a new agency that will combine the Department of Consumer and Industry Services with the Department of Career Development. Hollister, a former teacher, county commissioner and state representative, has served as mayor since 1994 and has overseen tremendous economic successes in Michigan's capitol city.

## AWARD WINNERS

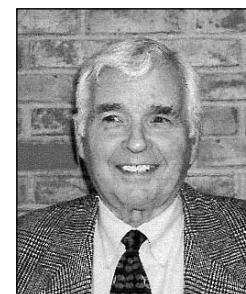
### BENNETT J. COHEN EDUCATIONAL LEADERSHIP AWARD



**Roger S. Newton, Ph.D.**

Dr. Newton is currently Senior Vice President of Pfizer Global Research and Development, and Director of Esperion Therapeutics, a Division of Pfizer Global Research and Development. He was formerly President and CEO of Esperion Therapeutics, Inc. (NASDAQ:ESPR), a biopharmaceutical company founded in 1998 and located in Ann Arbor, MI. Esperion is dedicated to the discovery and development of pharmaceutical products for the treatment of cardiovascular diseases through the use of a new treatment approach called "HDL Therapy". Esperion was acquired by Pfizer, Inc., in December 2003 for \$1.3 billion. Prior to founding Esperion, Dr. Newton was with Warner-Lambert/Parke-Davis (now Pfizer) from 1981-1998. As a distinguished scientist and Chairman of the Atherosclerosis Drug Discovery Team, he co-discovered and was the product champion of what is now the most prescribed cholesterol reducing drug in the world, atorvastatin (Lipitor®). Dr. Newton's research interests over the past twenty-five years have focused on the nutritional and pharmacological regulation of cholesterol and lipoprotein metabolism as they relate to atherosclerosis and vascular diseases. Dr. Newton is also an Adjunct Associate Professor in the Department of Pharmacology at the University of Michigan Medical School.

### SCIENCE EDUCATION AWARD



**Bruce D. Kocher, Ed.D.**

Dr. Kocher is currently Vice President for Student Services at Kalamazoo Valley Community College. He also serves as the outside unaffiliated member on the Institutional Animal Care and Use Committee (IACUC) at MPI Research and has served in this role for 15 years. Dr. Kocher is totally committed to animal research and the scientific process while emphasizing the humane treatment of animals. As a member of the IACUC, he routinely reviews 15 to 20 protocols per week. He reviews these protocols over the weekend, freely giving up his own time. He then participates in almost every Monday morning IACUC protocol review meeting where he actively participates and contributes to the discussion of these protocols. In addition, he makes additional time available to help conduct the semiannual facility inspections and program review.



**Merlin E. Ekstrom, D.V.M., M.S., DACVP**

Dr. Ekstrom has some 30 years of service to Wayne State University's Division of Laboratory Resources as its Director, and similar years of service to the profession as a laboratory animal veterinarian. He has a long-standing voluntary affiliation with the Michigan Veterinary Medical Association's (MVMA) Animal Welfare Committee. The official role of this committee is to "engage in activities that involve or promote animal welfare and the human-animal bond". Each year the MVMA solicits from its veterinarian members animal nominations for 2 awards. The Companion Animal of the Year Award identifies animals which idealize affection, loyalty, security, value and comfort. The Therapy Companion Animal of the Year Award ideals include service, affection, value and comfort in an animal used frequently as a therapy animal. After America suffered the devastating 9/11 Dr. Ekstrom rose to the occasion, and with his excellent skills as an educator at Wayne State University, he was amply prepared to develop a presentation of bioterrorism awareness. "The Connection Between Human Medicine and Veterinary Medicine in Preparedness Against Bioterrorism" is a thought-provoking and valuable tool that has been delivered many times by Dr. Ekstrom to both community and professional audiences.

### ESSAY CONTEST



**Situnyiwe Chirunga**

From over 300 entries, Ms. Chirunga's outstanding essay "Why Animals?" was chosen as the 2005 student winner. Her writing displays a detailed understanding of the importance of why animals are used in biomedical research. She attends John Glenn High School in Westland, Michigan.



**Cathy German**

For the second year in a row, a student of Ms. German's has been awarded first place in the MISMR Annual Essay Contest. Ms. German teaches Human Anatomy and Physiology at John Glenn High School in Westland, Michigan.